

# NETWORK PERFORMANCE MANAGEMENT



Are continuous bandwidth issues giving you headaches? Network monitoring is a complex problem made even more difficult by the ever-changing array of devices that are deployed in enterprise grade networks. up.time's Network Performance Management will reign in your network, freeing up your time to focus on meeting and exceeding your SLAs instead of fighting fires all day.

## Easily monitor availability & performance of 1000's of different network devices:

Easily monitor your SNMP enabled switches, routers, servers and other devices from major vendors such as Cisco, Juniper, Dell, HP or IBM with out of the box performance data collection and alerting. Gain instant visibility into switch port I/O bandwidth, operational status, errors, discards, and device latency. Detect & correct bandwidth issues before your end users complain.

## Quickly identify key network bottlenecks:

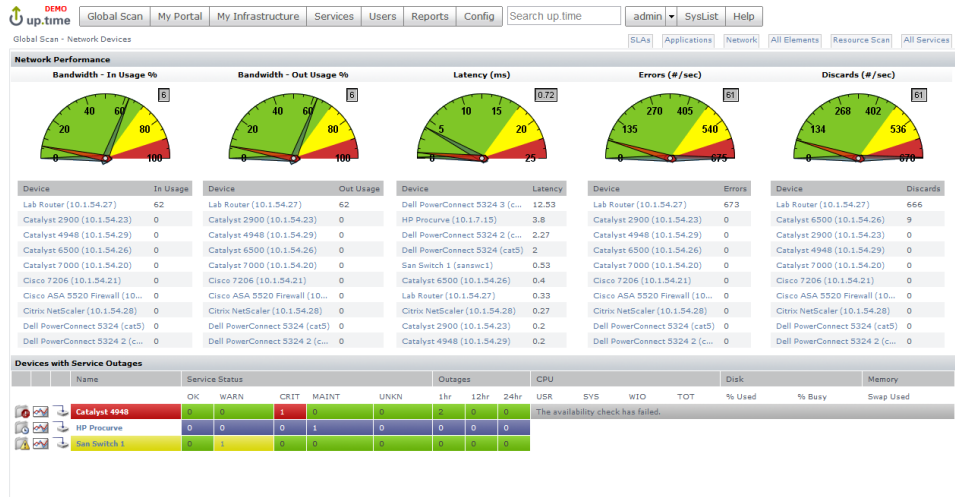
up.time's network dashboard provides a complete view of network performance and availability across your entire enterprise, allowing you to immediately detect problems and drill down to the root cause in seconds.

## Integrated NetFlow Traffic Analysis:

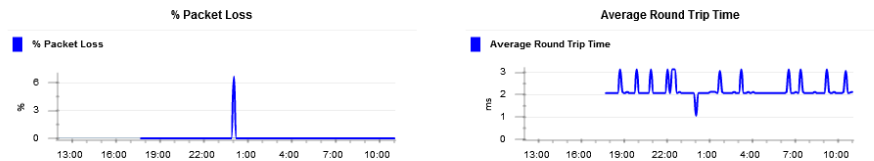
up.time's optional Scrutinizer module enables indepth views of network traffic patterns provided by Cisco NetFlow and Juniper JFlow-ready devices. Isolate the top conversations in your network by protocol, source IP, destination IP or even specific ports.

## Easily collect & analyze custom SNMP data:

up.time includes a vast library of vendor and device specific MIBs right out-of-the-box, but up.time doesn't stop there. Easily extend up.time's network performance management with the integrated "Custom SNMP Poller." Now you have the flexibility to collect virtually any MIB value for analysis & alerting.



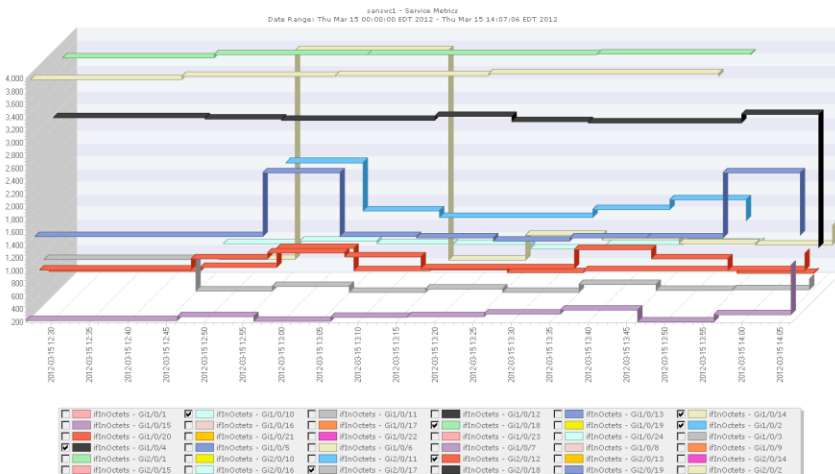
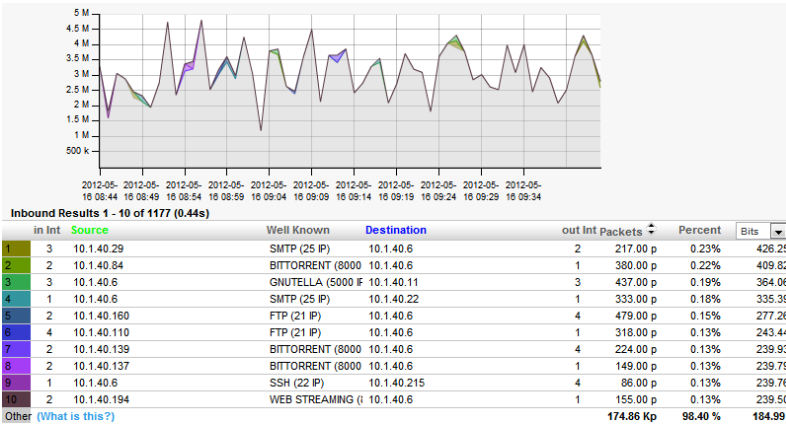
Service Status: sanswc1 [Cisco IOS Software, C3750 Software (C3750-IPBASE-M), Version 12.2(35)SE5, RELEASE SOFTWARE (fc1) Copyright (c) 1986-2007 by Cisco



Port Name	Type	Usage %	In Rate Mbps	In Usage %	Out Rate Mbps	Out Usage %	Errors #/sec	Discards #/sec	Status
Gi1/0/10	Ethernet	94	4.12	66	0.52	91	0	0	up
Gi2/0/14	Ethernet	94	0.93	52	0.06	85	0	0	up
Gi1/0/23	Ethernet	91	0.00	20	0.01	39	0	0	up
Gi2/0/4	Ethernet	87	14.38	25	31.09	21	0	0	up
Gi2/0/5	Ethernet	86	1.48	31	4.72	20	0	0	up
Gi2/0/7	Ethernet	79	0.34	79	0.05	55	0	0	up
Gi1/0/12	Ethernet	72	0.00	67	0.01	93	0	0	up
Gi2/0/18	Ethernet	70	0.63	94	5.99	44	0	0	up
Gi1/0/5	Ethernet	68	0.30	53	2.54	14	0	0	up
Gi1/0/18	Ethernet	66	4.96	51	0.08	45	0	0	up
Gi2/0/20	Ethernet	65	0	77	0.00	67	0	0	up
Po1	Virtual/VLAN	62	34.90	52	2.76	18	0	0	up
Gi1/0/13	Ethernet	62	0.02	40	0.00	0	0	0	up
Gi2/0/12	Ethernet	62	5.56	44	99.43	80	0	0	up
Po2	Virtual/VLAN	61	5.18	23	0.27	71	0	0	up
Gi1/0/11	Ethernet	60	0.92	9	0.04	70	0	0	up
Gi1/0/1	Ethernet	57	2.15	76	0.01	76	0	0	up
Gi2/0/2	Ethernet	57	0.11	27	0.00	15	0	0	up
Gi2/0/1	Ethernet	55	0.15	7	0.18	43	0	0	up
Gi1/0/17	Ethernet	52	0.32	61	0.01	32	0	0	up
Gi1/0/19	Ethernet	51	14.96	7	8.22	13	0	0	up
Gi1/0/15	Ethernet	48	0	35	0	59	0	0	up
Po3	Virtual/VLAN	45	2.29	78	0.19	61	0	0	in

### Fast Network Discovery:

Keeping track of your network can be a daunting task. uptime's Network Discovery makes it easy to scan your network for new devices and add them to uptime in a few clicks. Never worry about blind spots in your network infrastructure again.



### RIGHT OUT OF THE BOX, UPTIME COMES WITH:

- ✓ **Server Performance Monitoring**
  - Windows, UNIX, Linux, VMware, etc.
- ✓ **Application Performance Monitoring**
  - Including J2EE and Databases
  - End-User Experience Monitoring
  - Application & Web Transaction Monitoring
- ✓ **Network Performance Monitoring**
  - Any device, any vendor
  - Optional NetFlow monitoring available
- ✓ **Complete Datacenter Dashboards**
  - Powerful Performance, Availability and Capacity Management
- ✓ **IT Service Level Agreement (SLA) Management**

### About uptime software:

uptime software inc. is a privately held corporation founded in 2001 and headquartered in Toronto, Canada.

uptime is powerful and easy-to-use enterprise IT systems management that won't break the bank. Easily and accurately monitor, alert and report on the performance, availability and capacity of your entire datacenter (including all servers, applications and networks).

Used by 1,000's of midmarket and enterprise companies in over 32 countries, uptime is IT systems management software that increases IT performance, while consistently saving IT staff time and budget. To learn more about uptime software, please visit: <http://www.uptimesoftware.com>

#### The 451 Group on uptime

"In today's challenging economy and with IT budgets constrained, lower-cost but full-featured offerings like uptime's will have a chance to shine."

Dennis Callaghan, Analyst for The 451 Group.